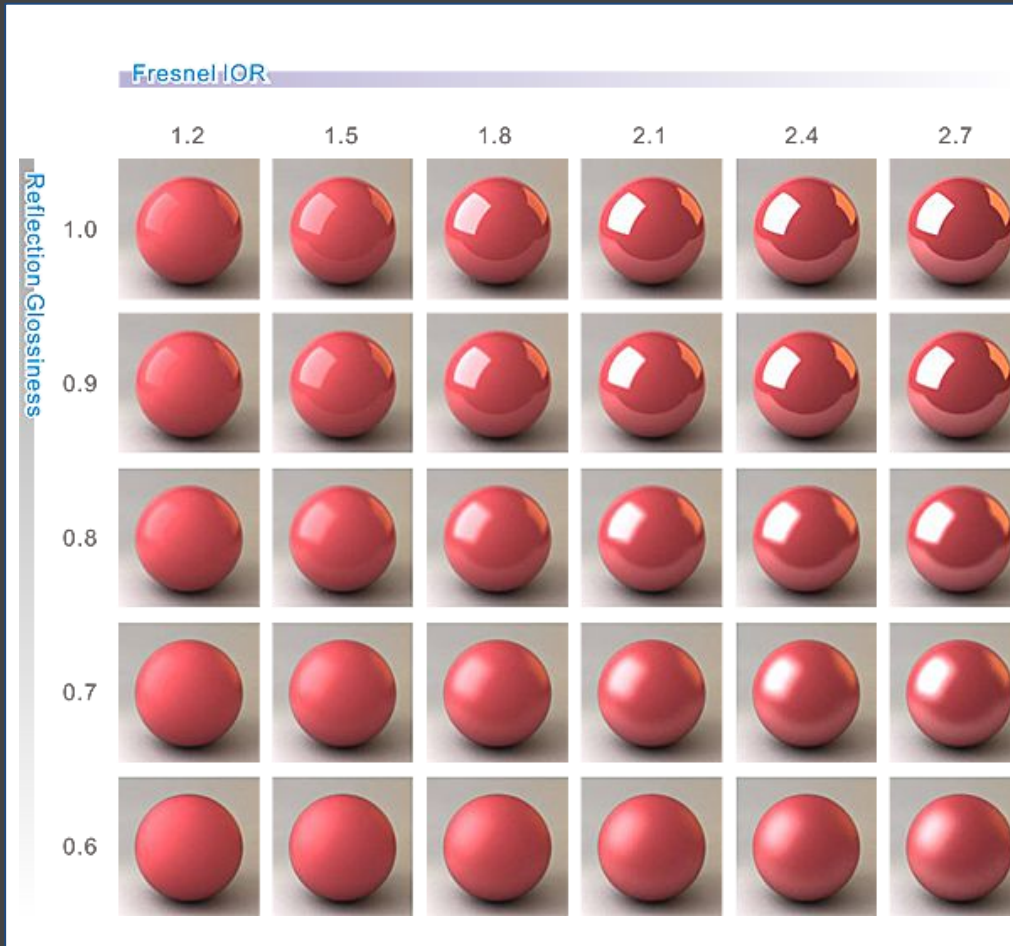


# Análise de Realismo dos Materiais

# Pontos de Atenção

- Reflexo / Índice de Reflexão
- Refração
- Luz Emissiva
- Imperfeições “Relevo”
- Tecido





# Metal

## Glossiness

0.5



0.4



0.3



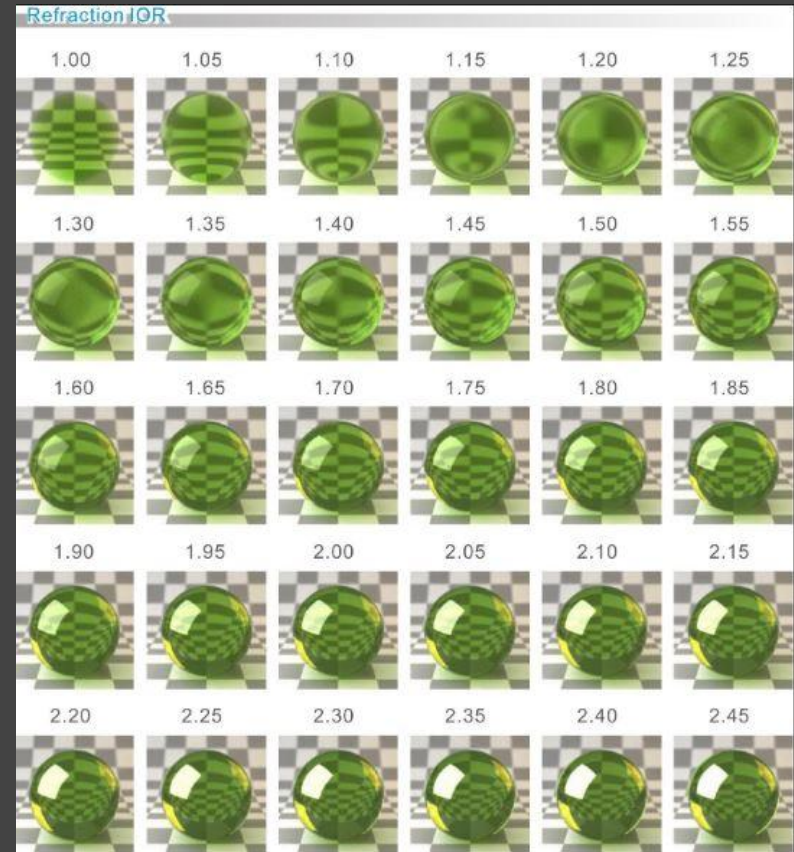
0.2

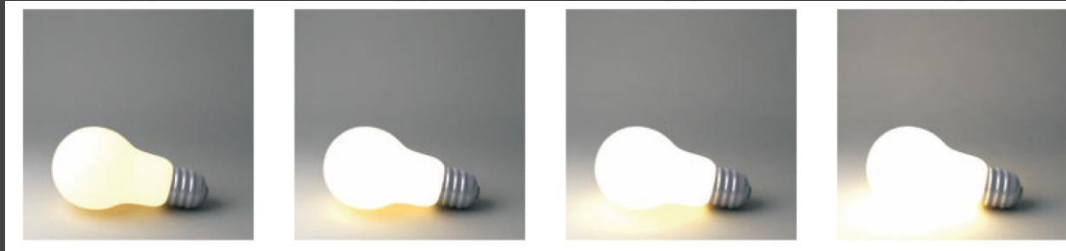


0.1

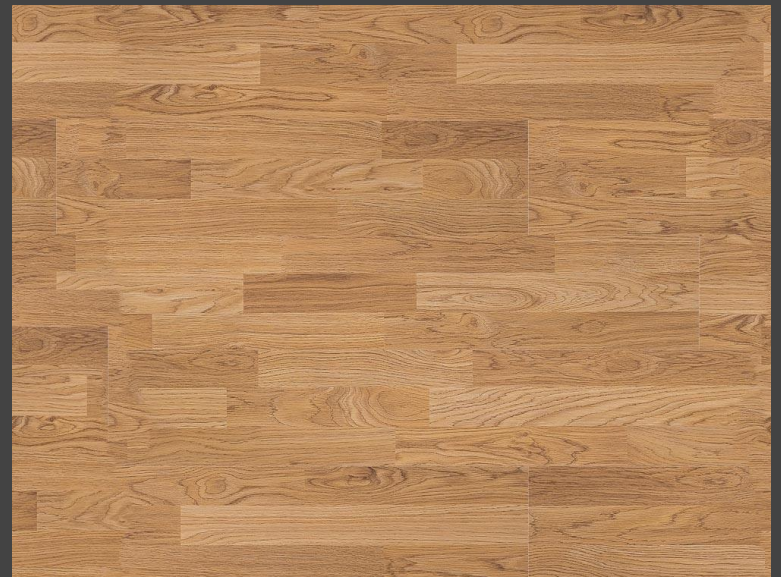


# Vidros





# Materiais com Textura

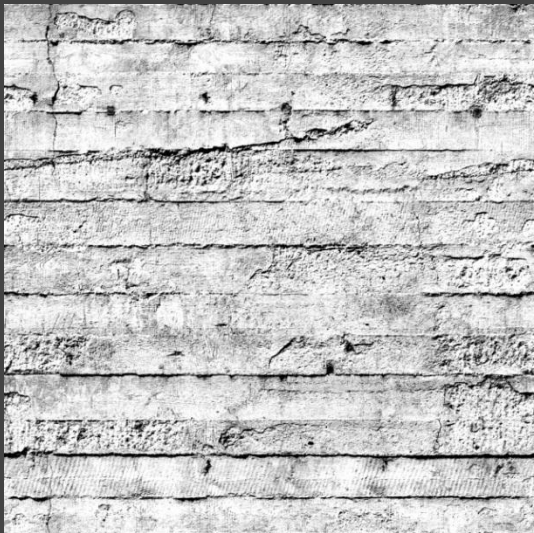




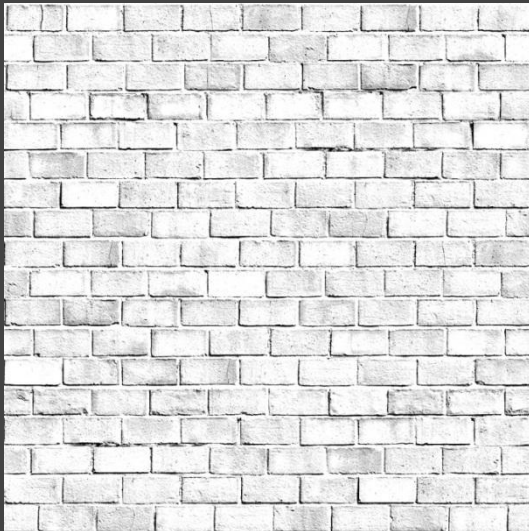
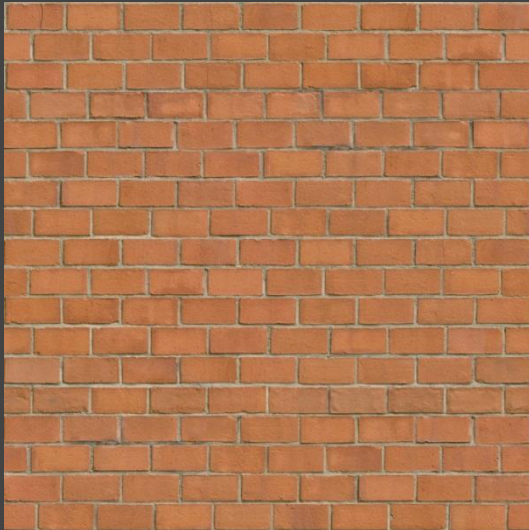
# Materiais com Textura



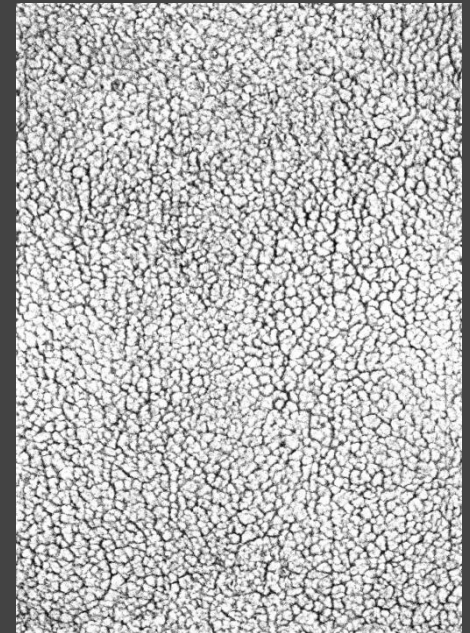
# Materiais com Relevo



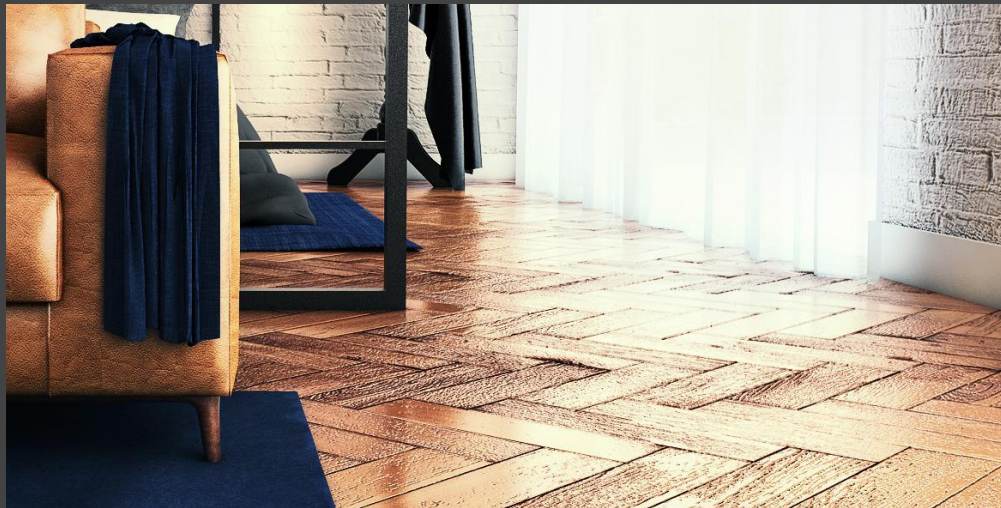
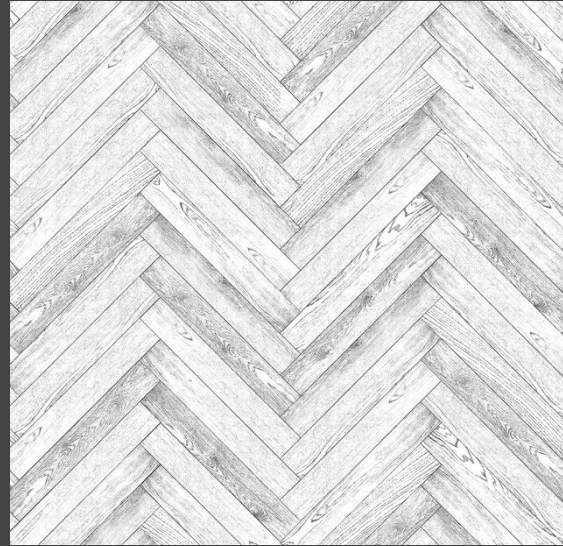
# Materiais com Relevo



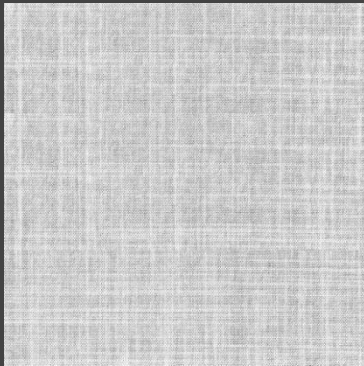
# Materiais com Relevo



# Materiais com Relevo



# Materiais Avançados - Tecidos



# Materiais Avançados - Tecidos Translúcidos

